

Operation Guide
LE Watch 2.17

Service. Support. Security.



www.cctvsentry.com
www.sentry-resellers.com
1.866.736.8796

Content

1. New Features	...3
2. Operation	...3
3. Setup Icon	...4
4. Register	...4
5. User	...4
6. Register Server	...5
7. LE Server	...5
7.1 Add a new LE Server	...6
7.2 Edit LE Server	...6
7.3 Delete LE Server	...6
7.4 Advance Setup	...7
7.5 Camera Status	...7
7.6 Refresh	...8
8. Save Directory	...8
9. Live Video and Audio	...8
9.1 POS transaction data	...10
9.2 Create a new monitor	...10
9.3 PTZ Camera	...10
10. Record Schedule	...12
10.1 Programmed recording	...12
10.2 Event recording	...13
10.3 Motion Detection recording	...14
11. Group Setup	...14
12. Group	...15
13. E-Map	...16
13.1 Select e-Map	...16
13.2 Load e-Map	...16
13.3 Delete e-Map	...16
13.4 Save e-Map	...16
13.5 Add cameras on e-Map	...18
13.6 Remote GPIO	...20
13.7 Exit e-Map	...20
14. Playback	...21
14.1 Remote playback	...21
15. Display screen selection	...22
16. Full screen display	...22
17. Loop	...23

18. Event & System logs	...23
18.1 System log	...23
18.2 Export system log function	...24
18.3 Clear system log function	...25
18.4 Edit function for "Note"	...26
18.5 Play motion detection or alarm triggered recorded files function	...26
18.6 Operation log	...28
18.7 Export operation log function	...28
18.8 Clear operation log function	...30
18.9 Edit function for "Note"	...30
19. Pop up of alarm	...31
20. Logout	...31
21. Stop or start live video	...31
21.1 Stop live video	...31
21.2 Start live video	...32

1: New features

DVR status ...pg7 – “Users can use the function of "DVR Status" to check if the DVR is in the connected, disconnected or login failed status.

Camera status... pg9 – Users can use the function of “Camera Status” to check the status of camera is unavailable, available , live video , disable or Enable record. ...Etc.

Save E-MAP... pg18 – Add file save in E-MAP function

Add Data/Motion/GPI histogram in remote playback... pg23 – Choose normal recording (Data) motion recording (Motion) or GPI recording data (GPI) to play recorded file.

Loop... pg 24 – Configure of automatic video switching. If you choose to show the whole group, then the video of the group will be switched cyclically.

Clear operation log function... pg31 – This function is to clearing un-wanted logs in the list.

Edit function for “Note” ... pg32 – This function is for editing text data to “Note” field. Its purpose is for operator to make note after alarm or event occurs.




Stop or Start live video... pg33 – Double click mouse right button to stop or start live video.



2. Operation: After bring up LE Watch software, use “**admin**” as both user name & password to login. This is the default setting. You can change the user name & password after login. But you cannot delete this item. The functional icons are all located at the right hand side of the screen. Please refer to Fig. 2.1 for the out looking.

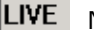




Fig. 2.1

- A: Setup B: Group C: e-Map D: Playback E: Single screen
- F: Quad screen G: 9 split screen H: 16 split screen I: NxN split display
- J: Cycle quad split screen

K:  Previous page L:  Next page M:  Full screen display

N:  system & operation log O:  Logout

P:  Number of connected Live video Q:  Number of recording video

3. Setup Icon:  There are eight functions under this icon. When click, a "Setup Selection" window



will prompt up as Fig. 3. Please select the function you want to do next step setup.

Fig. 3

4. Register: When this function is selected, a "Register" window as Fig.4 will prompt up. Send the PC Number back to Formosa21, Inc. or your local reseller and then you will get a "Register serial" number. Key in this number and click "Register" key for registration. You ONLY have to do registration when LE Watch 2.17 is used to connect more than 32 cameras.



Fig. 4

5. User: When this function is selected, the "User Setup" window will show up as Fig.5. There are three user levels, "administrator", "operator" and "user". An "administrator" authority can do every function in the window. An "operator" authority can do every function EXCEPT "user setup". A "user" authority can do ONLY "View playback" and "PTZ control". Please remember to click the "Enable" check before click "OK" button.

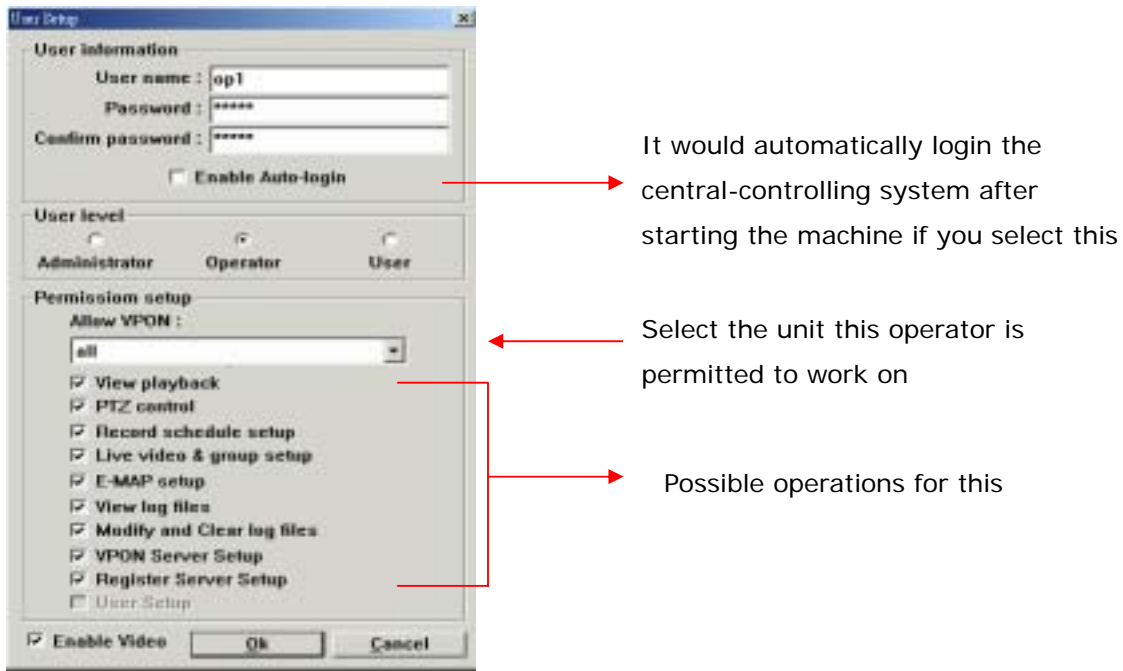


Fig. 5

6. Register Server: This function is for "Register server" set up. You should install and configure a "register server" if you want external units that use dynamic IP on the Internet to be accessible by LE Watch. Click "Add" or "Edit" to bring up Fig. 6 for adding new or edit existing register server. The register server of 61.222.188.35 is inside Formosa21, Inc. Customer can use this one for dynamic IP supporting without installing his own register server.

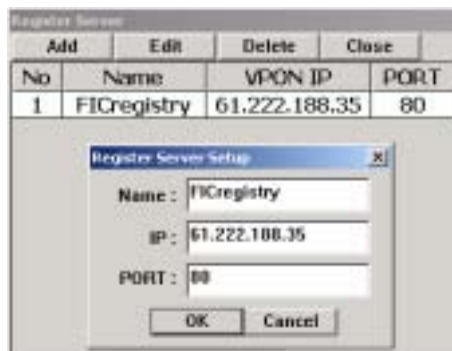


Fig. 6

7. LE Server: This is for configuring units that are to be managed by LE Watch software over the network. After select "LE Server" from Fig. 3, the LE Server window pops up on the screen as Fig 7.1. You can "add", "edit" or "delete" entries. Fig. 7.2 is the pop up window for adding a new LE Server unit or editing existing. There are some parameters need to be set. Users also can use the function of "DVR Status" to check if the DVR is in the connected, disconnected or login failed status as Fig 7.1.

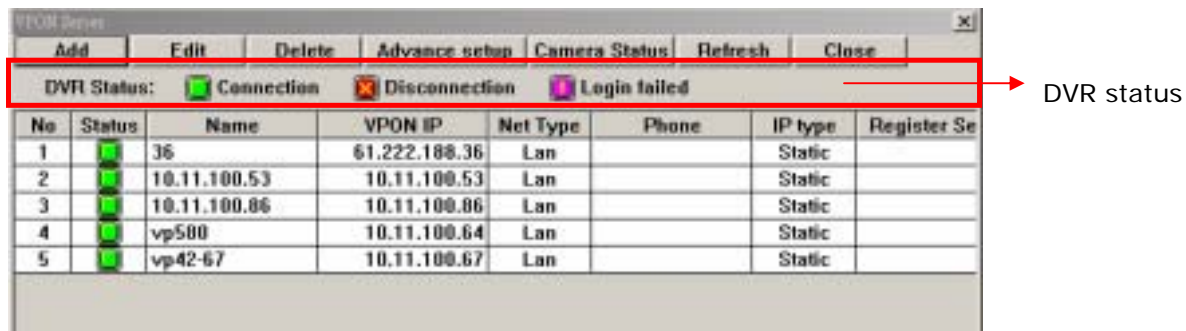


Fig. 7.1

7.1 Add a new LE Server:

- 1. Network Information:** LE Watch supports LAN or telephone line connection between remote LE Unit and LE Watch PC. You can select physical connection between this remote LE Unit and LE Watch PC as "LAN" or "Modem". When select "Modem", you need to enter telephone number and the group name of this unit. Modem connection between LE Watch and remote LE Units a one to one activity. LE Watch dials to external when its group is selected and the link drops when user switches to another group. At this moment, both "Live Video" and "recording video" of this remote modem connecting will stop. One group can have ONLY one modem connecting. So, if there are multiple remote modem units, you will have to assign each of them into different group.
- 2. Server Information:** IP type here can to "static " or "dynamic". In Fig. 7.2 "static" IP was selected so fields related to " dynamic IP" were blocked. Server name here is assigned for LE Watch identification of this unit, can be different from server name inside unit.
- 3. Account Information:** If the account and password are required for connecting to remote DVR, you need to set the account and password here. Password will be masked by star sign.
- 4. Alarm Set:** Users can set that the server can accept the alarm signal and show it in the screen of central control system when the specific alarm triggered point is started.

7.2 **Edit LE Server:** User can click "Edit" function to edit LE Server setup.

7.3 **Delete LE Server:** User can click "delete" function to delete LE Server setup.

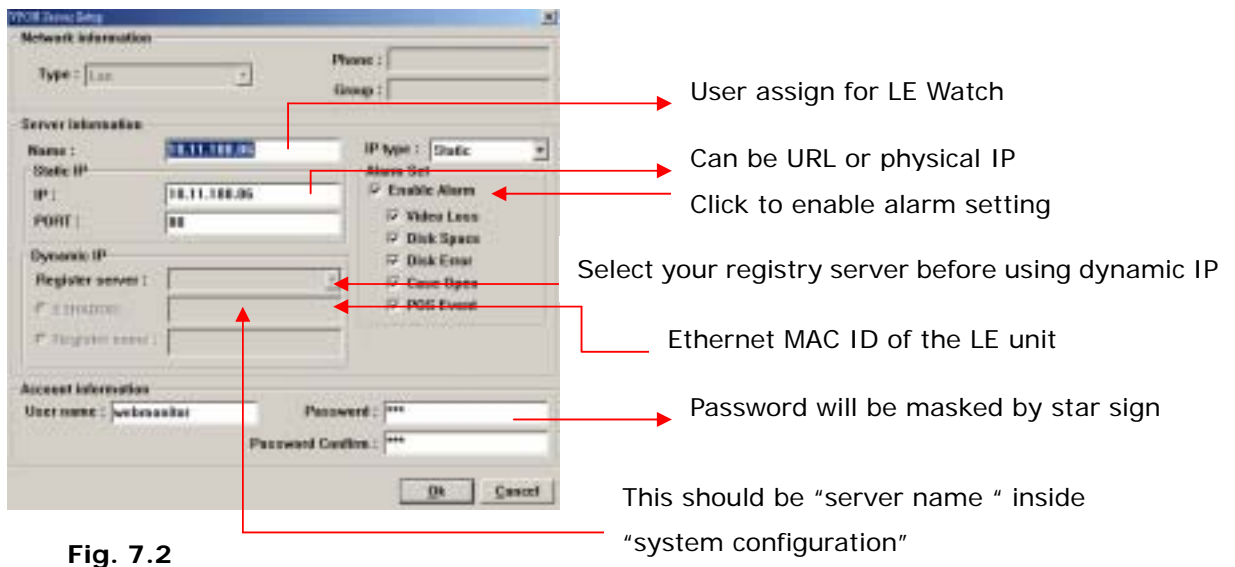


Fig. 7.2

7.4 Advance setup: You have to enter "User name" and "Password" here. Select the "Advance Setup" function of Fig.7.2 pop up administrator name & password of the selected LE Server unit. After entering correct values, you can do configurations to that LE Server unit through the pop up "Advance Setup" page as Fig. 7.3. This function is the same as you do configuration through remote IE browser.



Fig. 7.3

7.5 Camera Status: After adding a new LE Server, you can select "Camera Status" to check the status of camera. Please refer the camera status window below.

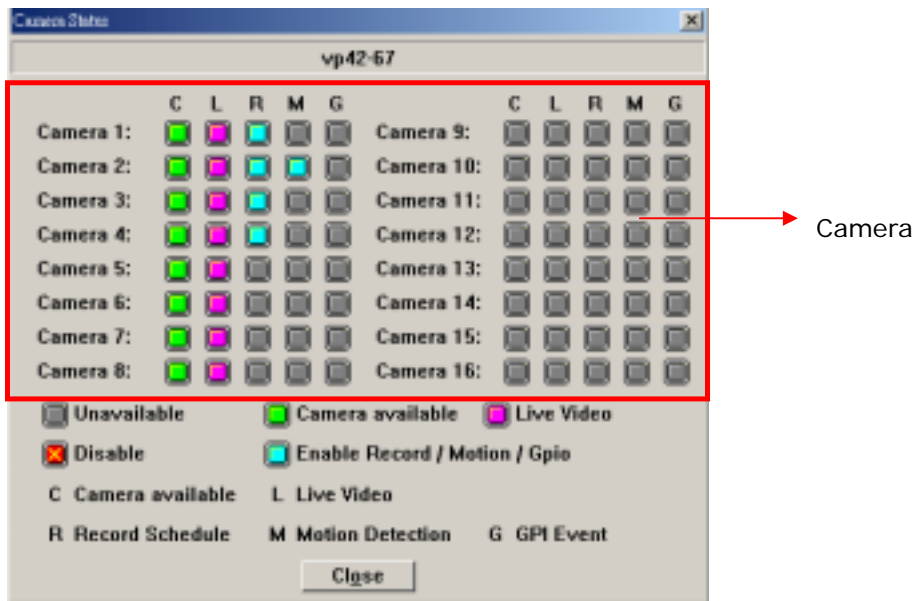


Fig. 7.4

7.6 Refresh: Click Refresh button to re-link DVR system.

8. Save Directory: Fig 8 is the "Save directory" window. Here, the "Directory" field is where you store recorded video files. "Quota" field is for storage space reservation. The unit is in Mbytes. When "Auto delete" is checked, the stored files will be deleted to allocate space when the reserved quota is full.

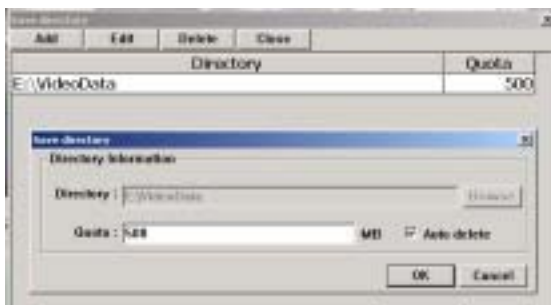


Fig 8

9. Live Video and Audio: Before you can see videos on LE Watch screen, you have to configure live videos. Fig 9.1 is the "Live video" window. The name field is given for easy identification of each video source. The "server " field is selected from the name you enter at section 6. Camera ID is the video input of that LE Unit related to "server". The number at display field is the location on LE Watch screen where camera video to be shown. Before you add any group on to LE Watch, it assigns the live video into a "default" group. Again, please remember to check "enable" to save the settings. If you have the audio device in your units, you also can assign the audio. Just checks "enable". Also if this camera was configured as a PTZ camera at side, the PTZ field will display its model number after clicking " check" button. The "Please upgrade LE firmware" window displays ONLY when firmware of that LE Unit was too old to contain PTZ information for LE Watch using. Starting the cash register, if the machine is connected to the POS systems, the inputted words would be showed on the designated monitors after selecting the starting the cash register function.

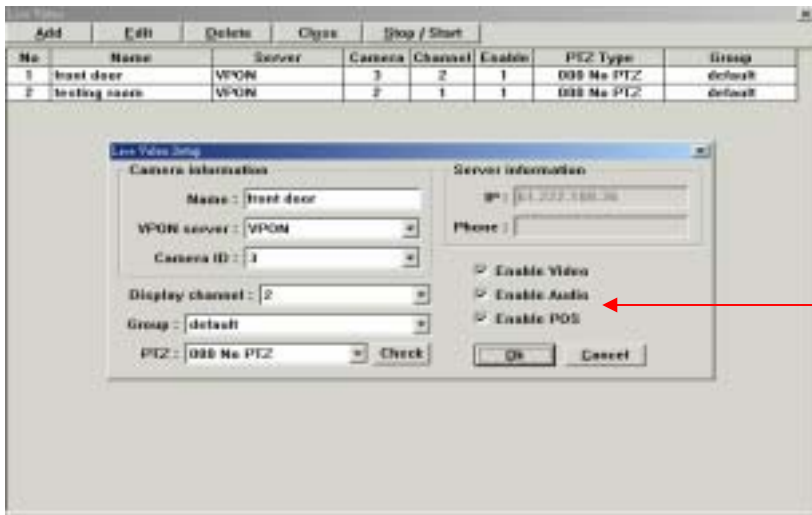


Fig. 9.1

1) If you enable audio function and click ok button then you will see Fig. 9.2 as below.

The "A" character indicates the LE unit of this camera was audio enabled.



The audio windows will popup after "A" is clicked. Audio operations are similar to the way from IE browser

Fig. 9.2

2) If you enable POS function and click ok button then you will see Fig. 9.3 as below.



Fig. 9.3

If there is a word of "T" showed in the monitor screen, it indicates that the function of "cash register" is started. After clicking the word of "T", the font control button would be showed. You could change the color of the words, which receive from the POS in this button.

9.1 Automatically capture POS transaction data into DVR from serial interface



Fig. 9.4

The central control software can show the words received from the POS on the designate screen when the remote cash register send the POS data.

9.2 Create a new monitor in the black screen: When this function is selected, the "Live Video Setup" window will show up as Fig.9.5. It could be created a new monitor by clicking the life key of mouse twice in the black screen. Please remember to add a new LE Server first. (Please refer the chapter 7: The method of creating a new LE Server)



Fig. 9.5

9.3 PTZ Camera: If you are sure that this camera is a LE supported PTZ camera, you can choose it manually from the supporting list as fig. 9.6

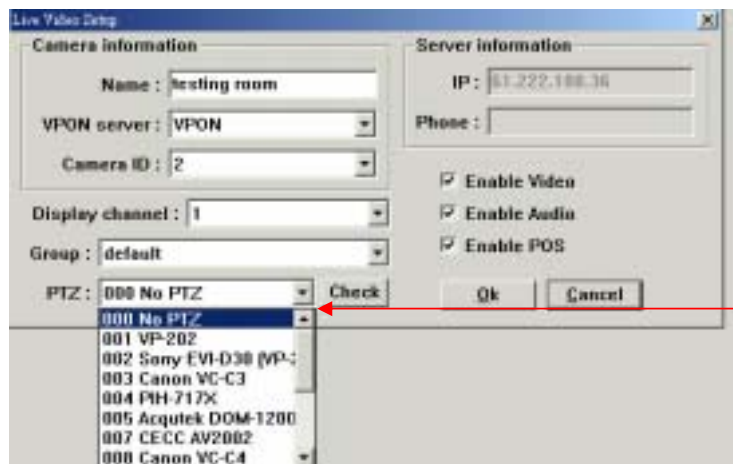


Fig. 9.6

When the camera is equipped with PTZ function, there will be a small “P” at the left bottom of “Live Video” display as Fig. 9.7 Click “P” to bring up PTZ control window as Fig. 9.8



Fig. 9.7

Click here to bring up PTZ control window Fig.

The out looking of PTZ control window varies with different PTZ cameras. Fig.9.8. is for SONY EVI/D30. You can control the movement of this camera by clicking the function keys on it. You can also select camera-moving speed to reach the target you want. But because LE Watch is running under network environment, the network bandwidth is critical to video response time.



Fig. 9.8 Camera moving speed

10. Record schedule: You can configure “programmed”, “Event” & “Motion detection” recording under Record schedule setup. Recording is camera based. That means you will have to set up recording mode for each camera. When switch to the different mode, the inputted words will not disappear in order to provide users for convenient setting. Users only by their opinion.

Name	Enable	Method	VPON IP	Camera	Start Condition
01	1	Programmed	10.11.100.67	1	00:00:00 -> 00:00:00
02	1	Programmed	10.11.100.67	2	00:00:00 -> 00:00:00
03	1	Programmed	10.11.100.67	3	00:00:00 -> 00:00:00
04	1	Programmed	10.11.100.67	4	00:00:00 -> 00:00:00
2	1	Motion	10.11.100.67	2	00:00:00 -> 00:00:00
1	0	Motion	10.11.100.86	2	00:00:00 -> 00:00:00

10.1 Programmed recording: Fig. 10.1 is brought up after select “Record schedule” from section 3. Then “Record Schedule setup” window appears after click “Add” or “Edit” of Fig. 10.1



Fig. 10.1

On record schedule setup window, select “programmed” to do programmed recording configuration. “Programmed recording” means, after you give the recording condition, LE Watch software will do recording to this camera regularly based on your condition. On Fig 10.1,

Name – Given by administrator for identification purpose of this entry.

Server – The LE Unit this camera belongs to. Server is selectable from server names enter at section 7.

Camera ID – Video input port of server.

From/To – Record start and stop time in hh:mm:ss format.

Rate – Recording frame rate. Can be frames per second or seconds per frame selectable.

Enable – Check to enable these conditions.

Directory – Select from the “Save directory” enter at section 8

Apply to – Check to apply this recording condition to days of the week.

Note – You can easily add the sentence of comment which is showed in the alarm window

Finally, please click “OK” button to save the settings.

10.2 Event recording: Click “Event” at Fig. 10.1 brings up Fig. 10.2. The difference between Fig. 10.1& Fig. 10.2 is “GPIO”. When event recording, LE Watch software does the recording based on triggers from alarm inputs at unit.

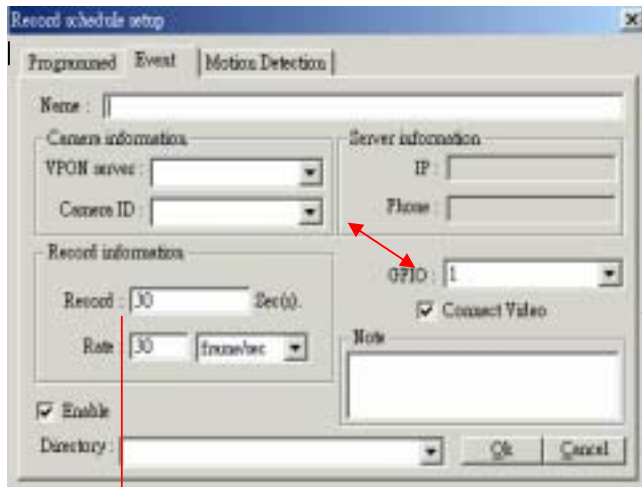


Fig. 10.2.

The recorded time must be 10-3600sec(s).

After choosing this function, the single camera image will be showed in the monitor when the alarm was triggered.

On Fig. 10.2, "Record" field determines the recording period after GPIO trigger. Settings on Fig. 10.2 mean, when GPIO#1 triggers, LE Watch will record 30 seconds at this camera. GPIO is selectable from 1 to 16.

10.3 Motion detection recording: Under motion detection recording, LE Watch software records ONLY when there is motion detects at side to this camera. On Fig. 10.3, the "From / To" fields set valid time period of motion detection and the "Record" filed sets how long LE Watch will record after motion detects. Other fields are the same as Fig. 10.2.



Fig. 10.3

The recorded time must be 10~3600sec(s).

11. Group Setup: LE Watch software can monitor more than 256 cameras over LAN or Internet. It is recommended to split these cameras into different groups for easier access. Maximum number of cameras in a group is recommended to be less than 32(include). When LE Watch install, there is a "default" group. You can NOT do "edit " or "delete" to default group, otherwise you will get error message as Fig. 11.2. When you select a "group", the camera members of this group will be listed on the screen as Fig. 11.1

Group setup							
	Add	Edit	Delete	Close			
Group name	No	Name	VPCN IP	Camera	Channel	Enable	PTZ type
default	1	DEMO1	61.222.188.36	1	1	1	No PTZ
demoGroup	2	DEMO2	61.222.188.36	2	2	1	No PTZ
	3	DEMO3	61.222.188.36	3	3	1	No PTZ
	4	DEMO4	61.222.188.36	4	4	1	No PTZ

Fig. 11.1




Fig. 11.2

You can add a group by click "Add" and then enter the group name as Fig. 11.3. Click "OK" to save it.



Fig.11.3

12. Group:  When click "Group" icon, all groups configured will be listed on the screen. Click the group name you want to display camera videos of this group on the screen. When there are too many groups in LE Watch, you can enter a particular group name for search, as Fig. 12 shows.

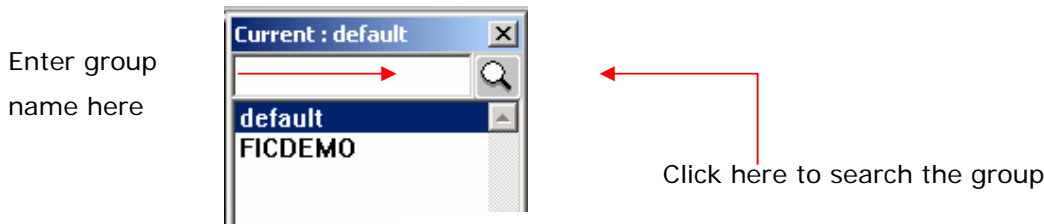



Fig. 12



The left-up corner of central-control screen would show the selected group and the page number after selecting the monitored group

13. E-Map:  The E-Map function provides association of camera locations with an electronic map. You can select & upload a map, then assign cameras locations on the map. Then click any one of the location to see camera video on the screen.

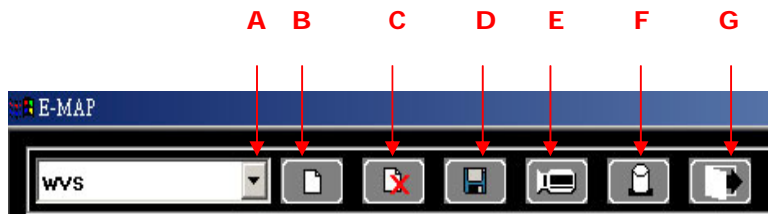




Fig. 13


13.1 Select E-Map: On Fig. 13, click position A for the list of E-Map that was loaded inside LE Watch. Then select the E-Map you want. After selected, this E-Map will be shown on the screen.

13.2 Load E-Map:  Click position B on Fig. 13 to load an E-Map into LE Watch. The E-Map has to be in BMP format. You will be prompted to ask for save the E-Map. Click "OK" to save it into LE Watch, as shown on Fig.13

13.3 Delete E-Map:  Click position C to delete current E-Map.

13.4 Save E-Map: Click  button and enter Map name and Group name, the new map will save in E-MAP.

1. Click position A for the list of E-Map that was loaded inside LE Watch. Then select the E-Map you want.

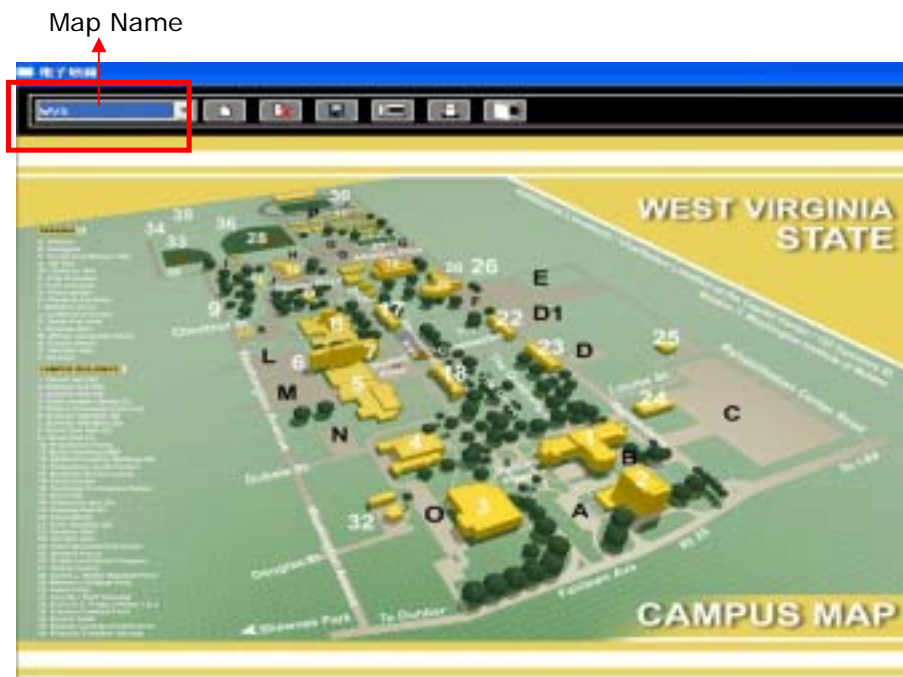
After selected, this E-Map will be shown on the screen. Then click  button to bring up save window as below, user can choose to save or cancel it.



- 2. After click "ok " button and the saved window will pop up for you to enter Map name and Group Name.



- 3. Click "ok " button to save map when you enter Map name and Group name. The Map name will show up on the upper left of E-MAP.



13.5 Add camera on E-Map 




Fig. 13.1

After click position E, the camera icon will appear on the screen. Move camera icon to the position on the E-Map where the camera is installed, then left click mouse to fix its location. The “Live video setup” window will show up and ask for camera information as Fig. 13.1. Finally, click “OK” to complete the assignment. Fig. 13.2 is an E-Map completed with camera locations. Move mouse to a camera icon and then click it, video of this camera will show up on the screen. Right click mouse at camera icon will allow you to do edit or delete this camera.



Fig. 13.2

You can only install up to eight cameras in the E-MAP. If you add more than eight cameras, the new camera will replace the first one and so on. After creating a new camera, you can click the picture of  to show the monitored video. Please refer the window as below.



When a camera is associated with an E-Map, there will be a small "M" at the right hand bottom of its Live Video window as Fig. 13.3. You can click it to bring up the E-Map and identify the location of this camera on the map.



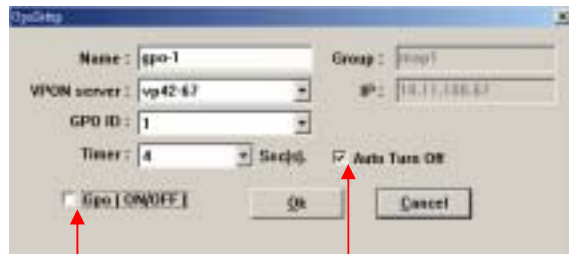
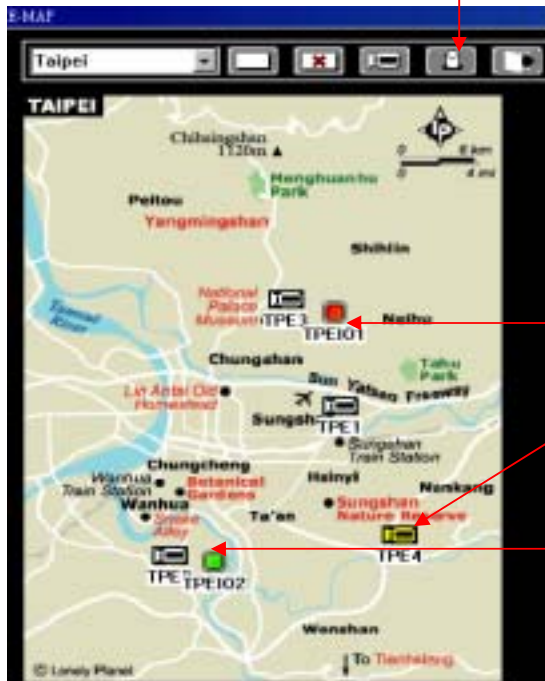
Click here to bring up the associated E-Map

Fig. 13.3

13.6 Remote GPIO



Left Click this icon, hold mouse left button, move to where you want and release left button to get "GPIO Setup" window (Fig13.4)



Check to activate GPIO Auto Turn off GPIO in specific time

Become RED when this GPIO is "ON"

Yellow means when you leave e-Map and back to "Live Video" The screen will display this camera

Green means this GPIO is "OFF"

13.7 Exit E-Map:



Click position G to exit E-Map function.


14. Playback:  There are two playback modes you can select, one is "Local" and the other is "Remote". Local playback means play the recorded video files that were saved inside "Save directory" configured under section 8. Fig. 14.1 shows local playback screen. Save directory is at left side and Recorded files are listed at right hand side. Click the entry on the list to start play that file. You need remote player ACTIVE X installed to playback successfully. The recorded file is named based on IP-Date Time, you can click "Save as" to save it into other name you want.



Fig. 14.1

14.1 Remote Playback: When "Remote playback" is selected, Fig. 14.2 will pop up on the screen. You can select LE Server, date, time for the recorded video that you want to play. You can also select the Video channel that you want to save on LE Watch PC hard disk. The status panel displays the playback status of the current recording. The aqua line(Data) indicates recorded data over a one hour time interval. The yellow bars (Motion) indicate the instances when motion was detected. The (GPI) event was detected. Click anywhere on the Data, Motion, or GPI lines to start playback from the required point.



Select video channel to save on local HDD

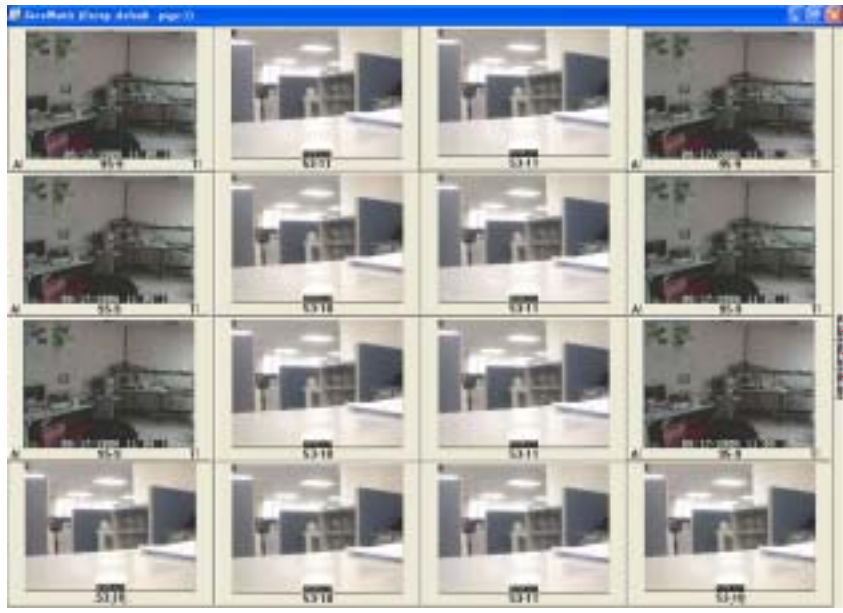
Choose normal recording, motion recording or GPI recording data to play recorded file.

Select remote LE Select date & time

The aqua colored portion is where there is recorded data in that hour.

15. Display screen selections: Icons E to L at right hand side of Fig. 2.1 are for LE Watch display selection. You can select single window by clicking icon E or split windows by clicking icons F,G, H, I. Icon J is 4 windows sequencing. That means the display will show 4 camera views at a time and changes to another 4 cameras in a predefined period. Icons K & L are for "page up" & "page down" camera views.


16. Full screen display 

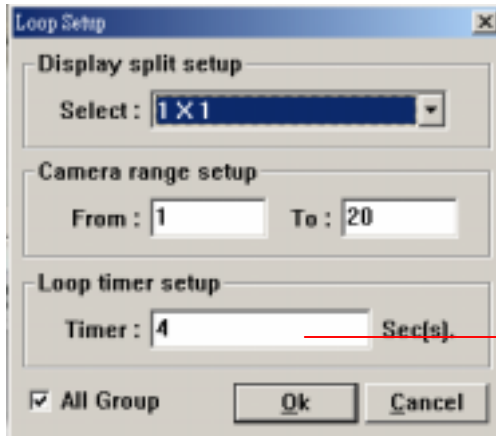


Page up


Page down

Actual size

17. LOOP:  Configure of automatic switching the video of surveillance. You can select different numbers of partition (1X1, 2X2, 3X3, 4X4, 5X5, 6X6, 7X7) of image, the range of camera, and the time interval to switch the video. If you choose to show the whole group, then the video of the group will be switch cyclically.



The loop timer setup must be 4-3600 sec(s)

18. Event & System logs:  There are two kinds of logs. One is system log , the other is operation log. Any alarm will be written into system log including motion trigger、GPIO trigger、Disk error、Video loss、POS event...etc. Any operation will be written into operation log.

18.1 System log: The two fields in log message, "Name" and "Note". The "Name" field indicates LE Server name of the " IP" field. This works ONLY for static IP. The "Note" field is for operator entry of responses or actions after alarm or event occurs. This is good for tracking purpose. If the switch of alarm is selected, the single camera image will be showed in the monitor when the alarm is triggered. (Please enable the alarm function in the setting menu. When the alarm is triggered, the alarming event will be showed and recorded by the user setting. Please make a reference to the section 1-4)

Alarm Type	Name	Server Name	Message	Time
Motion Detection	2	vp42-67	Camera 2	2006/08/07 11:15:15
Motion Detection	2	vp42-67	Camera 2	2006/08/07 11:15:50
Motion Detection	2	vp42-67	Camera 2	2006/08/07 11:16:21
Motion Detection	2	vp42-67	Camera 2	2006/08/07 11:16:54
Motion Detection	2	vp42-67	Camera 2	2006/08/07 11:17:30
Motion Detection	2	vp42-67	Camera 2	2006/08/07 11:18:18
Motion Detection	2	vp42-67	Camera 2	2006/08/07 11:18:48
Motion Detection	2	vp42-67	Camera 2	2006/08/07 11:19:20
Motion Detection	2	vp42-67	Camera 2	2006/08/07 11:19:51
Motion Detection	2	vp42-67	Camera 2	2006/08/07 11:20:23
Motion Detection	2	vp42-67	Camera 2	2006/08/07 11:20:54

Fig 17.1



The Single camera image will be showed in the monitor when the alarm is triggered.

18.2 Export system log function: You can export system log as a file to hard disk in “txt” format. This file can be opened by MS-Excel for further editing. Click “Export” field at Fig. 17.2 to bring up “Selection Window” as Fig. 17.3. Then, enter the starting and ending time that you want the logs to export and click “OK”.

Click to bring up selection window

Alarm Type	Name	Server Name	Message	Time
Motion Detection	2	vp42-67	Camera 2	2006/08/07 11:15:15
Motion Detection	2	vp42-67	Camera 2	2006/08/07 11:15:50
Motion Detection	2	vp42-67	Camera 2	2006/08/07 11:16:21
Motion Detection	2	vp42-67	Camera 2	2006/08/07 11:16:54
Motion Detection	2	vp42-67	Camera 2	2006/08/07 11:17:30
Motion Detection	2	vp42-67	Camera 2	2006/08/07 11:18:18
Motion Detection	2	vp42-67	Camera 2	2006/08/07 11:18:48
Motion Detection	2	vp42-67	Camera 2	2006/08/07 11:19:20
Motion Detection	2	vp42-67	Camera 2	2006/08/07 11:19:51
Motion Detection	2	vp42-67	Camera 2	2006/08/07 11:20:23
Motion Detection	2	vp42-67	Camera 2	2006/08/07 11:20:54

Fig 17.2

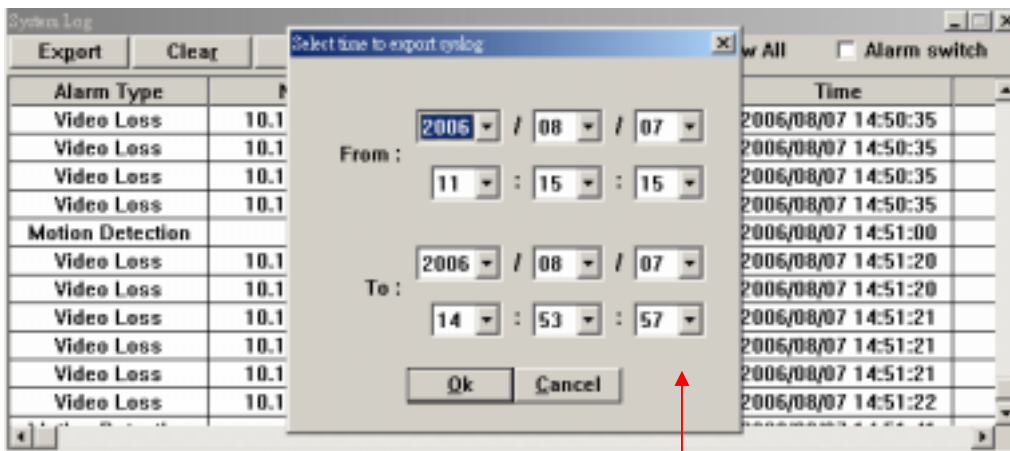


Fig 17.3

Selection window

After click "OK" at Fig. 17.3, the "file saving window" will pop up for you to enter "File name" and directory. Click "Save" to begin log exporting.

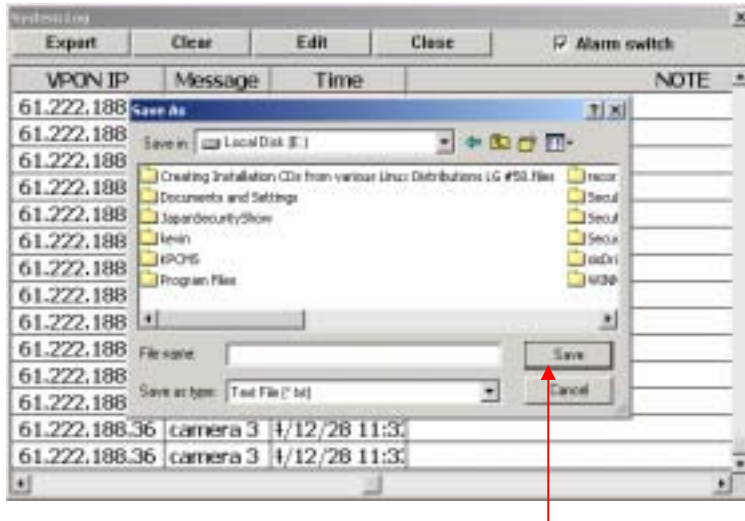


Fig 17.4 File saving window

18.3 Clear system log function: This function is for clearing un-wanted logs in the list. It is recommended to do regular export and clear up of log list to prevent from occupy too much memory. Click "Clear" at Fig. 17.5. A pop up window will ask for entering selections.

Clear log selection request

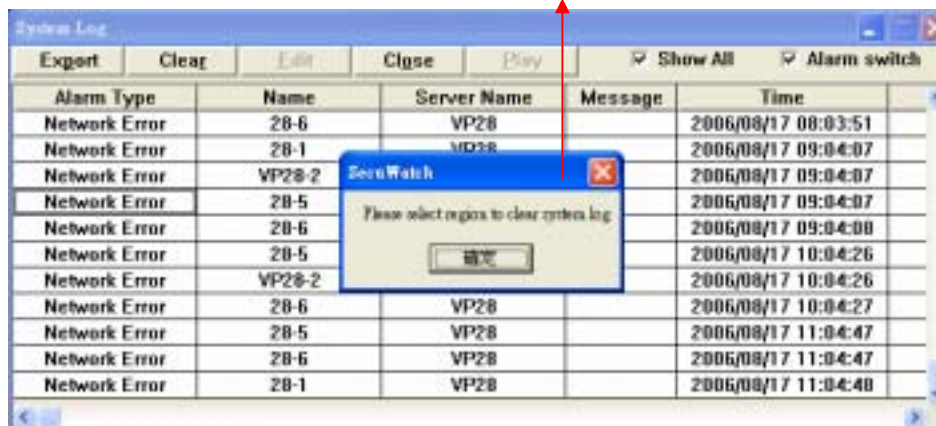


Fig 17.5

Click "OK" at Fig. 17.5, the selection window same as Fig. 17.3 will pop up for your entering start and stop time of the alarm period that you want to clear log. Finally, click "OK" to clear the logs.

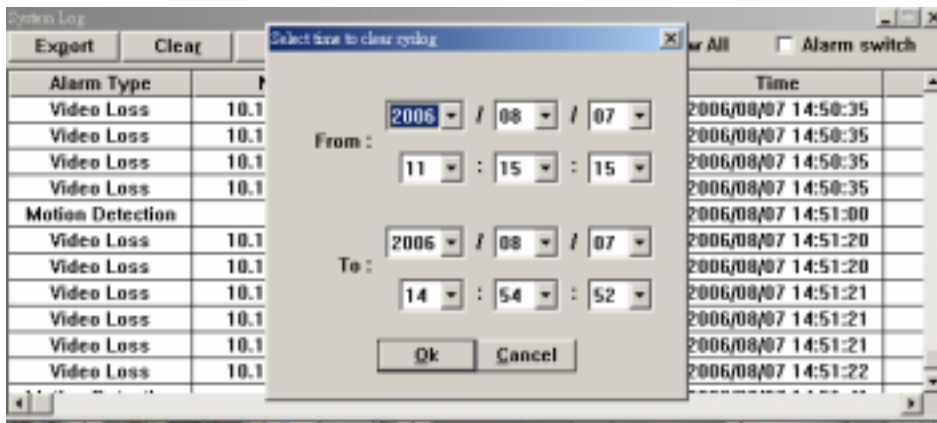


Fig 17.6

18.4 Edit function for “Note”: This function is for editing text data to “Note” field. Its purpose is for operator to make note after alarm or event occurs. Select the row in log list which you want to note and then click “Edit” at Fig. 17.5 to bring up Fig. 17.7. Enter text into the note window and click “OK” to save it onto “Note” field of that row.

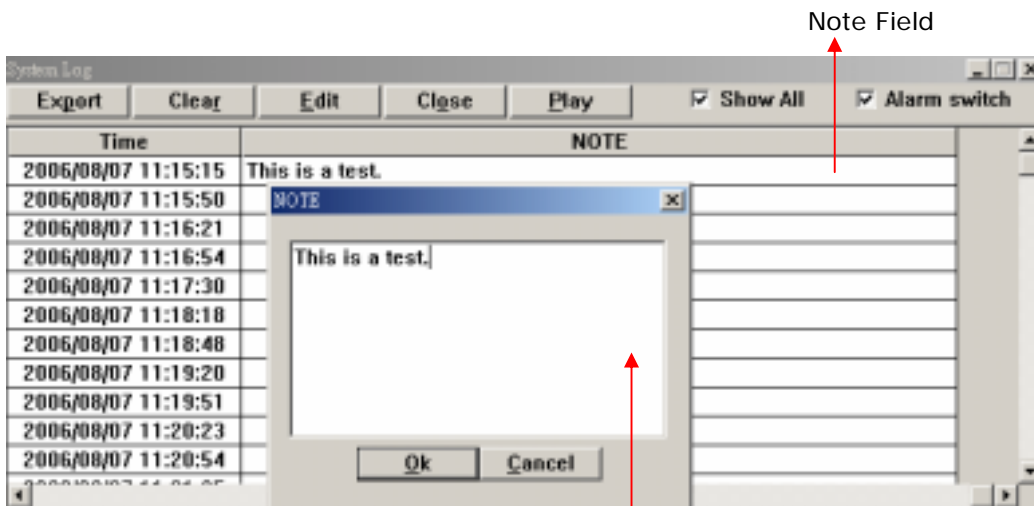


Fig 17.7 Note window

18.5 Play motion detection or alarm triggered recorded files in system log: Only allowed to play the video files of motion detection and alarm triggering in system log at Fig 17.8

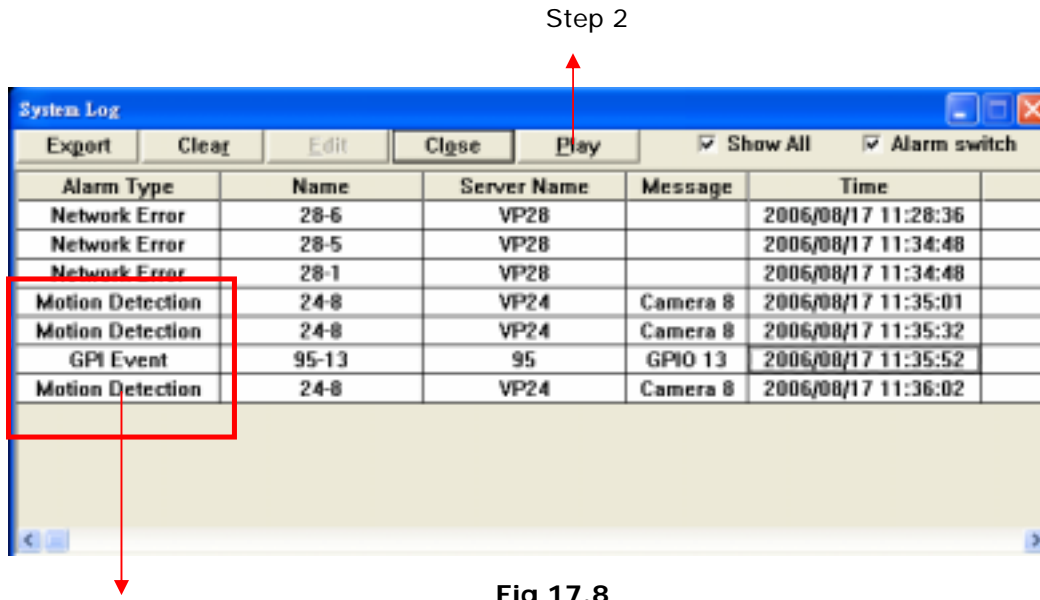


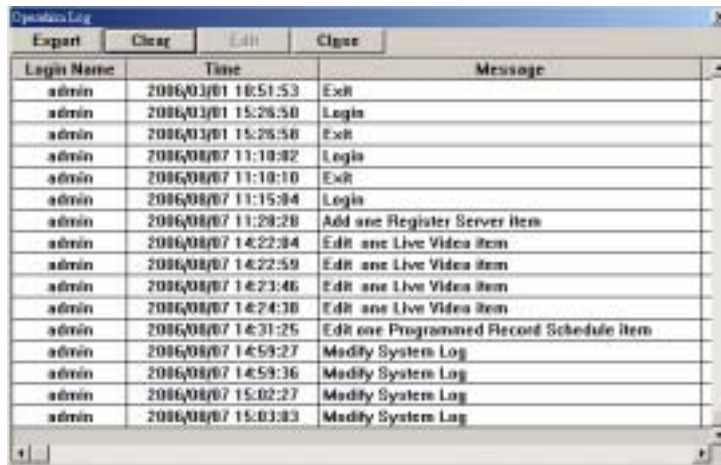
Fig 17.8

Step 1, select a row in the system log window above then step 2, click the Play button. The video file list will be shown in the playback window as below. You can choose the file to play.



Fig 17.9

18.6 Operation log: Operation log records operation activities such as login, exit, add/edit user, add/edit live video settings... These functions are all grand to operator & administrator only. Please refer to Fig. 17.10. Date & time are attached to each entry of operation log.



Login Name	Time	Message
admin	2006/03/01 10:51:53	Exit
admin	2006/03/01 15:26:50	Login
admin	2006/03/01 15:26:50	Exit
admin	2006/08/07 11:10:02	Login
admin	2006/08/07 11:10:10	Exit
admin	2006/08/07 11:15:04	Login
admin	2006/08/07 11:28:20	Add and Register Server Item
admin	2006/08/07 14:22:04	Edit and Live Video Item
admin	2006/08/07 14:22:59	Edit and Live Video Item
admin	2006/08/07 14:23:46	Edit and Live Video Item
admin	2006/08/07 14:24:30	Edit and Live Video Item
admin	2006/08/07 14:31:25	Edit one Programmed Record Schedule Item
admin	2006/08/07 14:59:27	Modify System Log
admin	2006/08/07 14:59:36	Modify System Log
admin	2006/08/07 15:02:27	Modify System Log
admin	2006/08/07 15:03:03	Modify System Log

Fig. 17.10

Event log records system events such as video lost, network error & motion detection. Date / Time, camera ID and the IP address of the LE Unit are included in the log.

Motion Detection	10.11.100.224	Camera 2	2004/04/01 16:00:09
Motion Detection	10.11.100.224	Camera 6	2004/04/01 16:00:09
Motion Detection	10.11.100.224	Camera 2	2004/04/01 16:02:50
Motion Detection	10.11.100.224	Camera 6	2004/04/01 16:02:50
Motion Detection	10.11.100.224	Camera 2	2004/04/01 16:13:25
Motion Detection	10.11.100.224	Camera 6	2004/04/01 16:13:26
Motion Detection	10.11.100.224	Camera 2	2004/04/01 16:18:35
Video Loss	10.11.100.222	Camera 15	2004/06/01 11:47:26
Video Loss	10.11.100.222	Camera 9	2004/06/01 11:47:29
Video Loss	10.11.100.222	Camera 5	2004/06/01 11:47:30
Network Error	10.11.100.222		2004/06/01 11:47:36
Network Error	10.11.100.222		2004/06/01 11:47:37
Video Loss	10.11.100.222	Camera 13	2004/06/01 11:47:38
Network Error	10.11.100.222		2004/06/01 11:47:39
Motion Detection	10.11.100.224	Camera 2	2004/06/01 12:06:50
Motion Detection	10.11.100.224	Camera 6	2004/06/01 12:06:52
Motion Detection	10.11.100.224	Camera 8	2004/06/01 12:06:53

Fig. 17.11

18.7 Export operation log function: You can export operation log as a file to hard disk in "txt" format. This file can be opened by MS-Excel for further editing. Click "Export" field at Fig. 17.10 to bring up "Selection Window" as Fig. 17.12. Then, enter the starting and ending time that you want the logs to export and click "OK".

18.8 Clear operation log function: This function is for clearing un-wanted logs in the list. It is recommended to do regular export and clear up of log list to prevent from occupy too much memory. Click "Clear" at Fig. 17.14. A pop up window will ask for entering selections. Click "OK" at Fig. 17.14, the selection window same as Fig. 17.12 will pop up for your entering start and stop time of the period that you want to clear log. Finally, click "OK" to clear the logs.

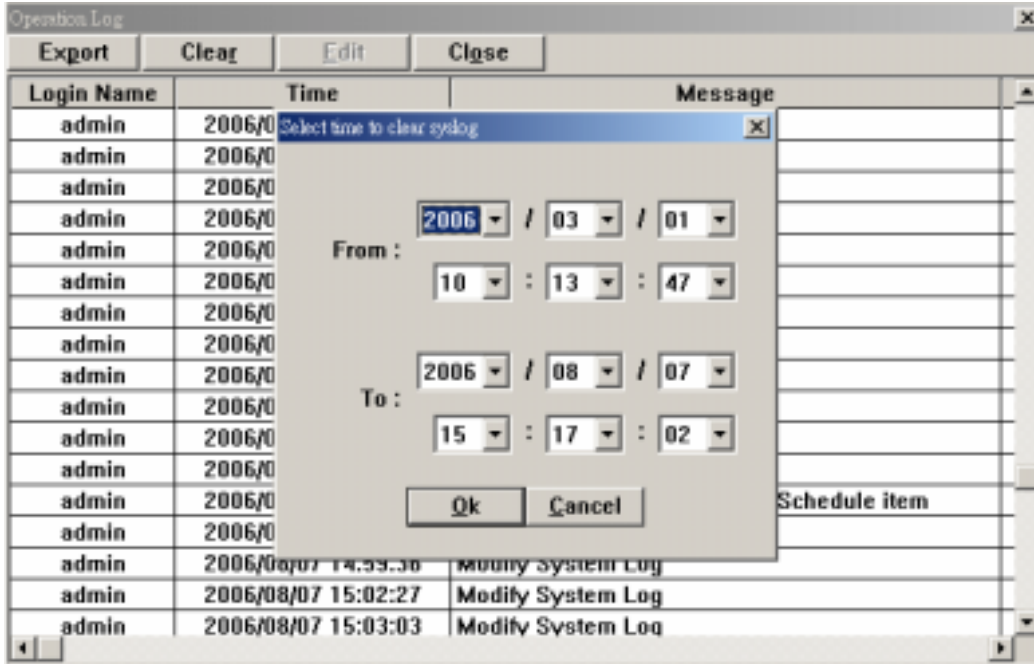


Fig17.14

18.9 Edit function for "Note": This function is for editing text data to "Note" field. Its purpose is for operator to make note after alarm or event occurs. Select the row in log list, which you want to note and then click "Edit" at Fig. 17.14 to bring up Fig. 17.15. Enter text into the note window and click "OK" to save it onto "Note" field of that row.

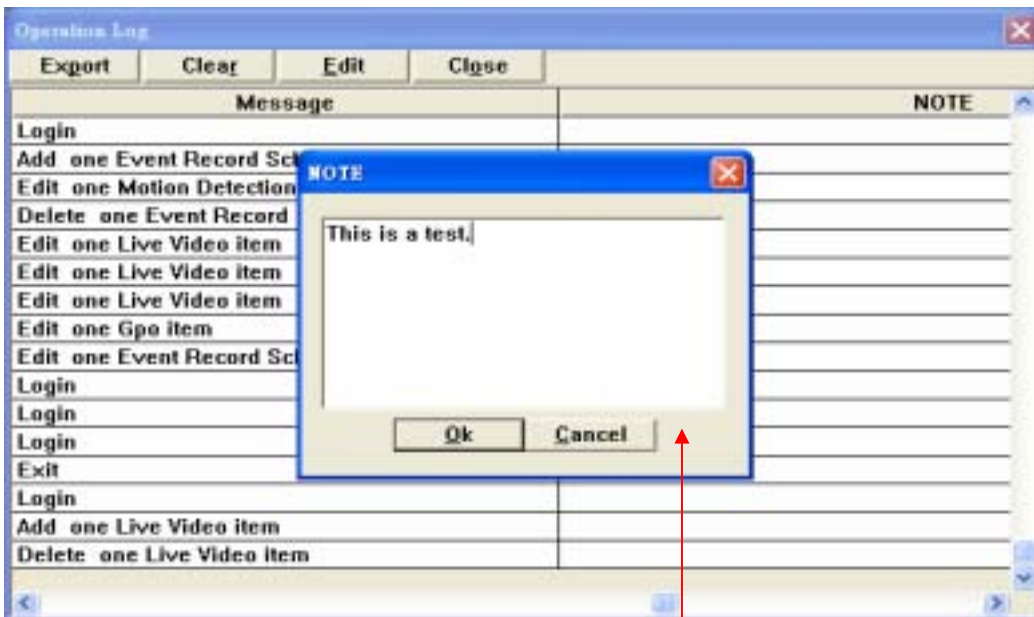


Fig17.15 Note window

19. Pop up of alarm: There are two kinds of alarm. One is from GPIO (digital input points) and the other is from motion detection of cameras. When LE Watch receives these alarm signals, the camera video associated with the alarm can be displayed on the screen accomplished with system log. To enable this function, you have to enable "Alarm switch" on "system log" set up screen as Fig 18. You also have to set up motion detection recording for the cameras that you want to pop up at section 10.2 when alarm triggers. Please be noted that if you want video pops up from units outside local LAN, you should set up your gateway IP address at LE Watch PC.

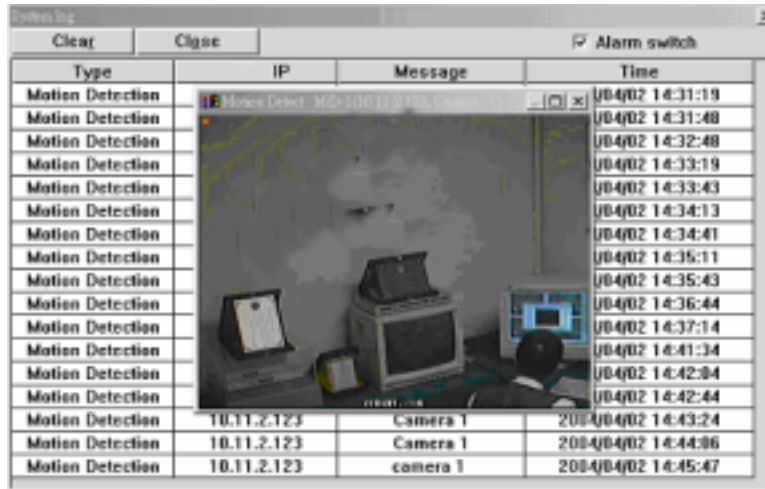




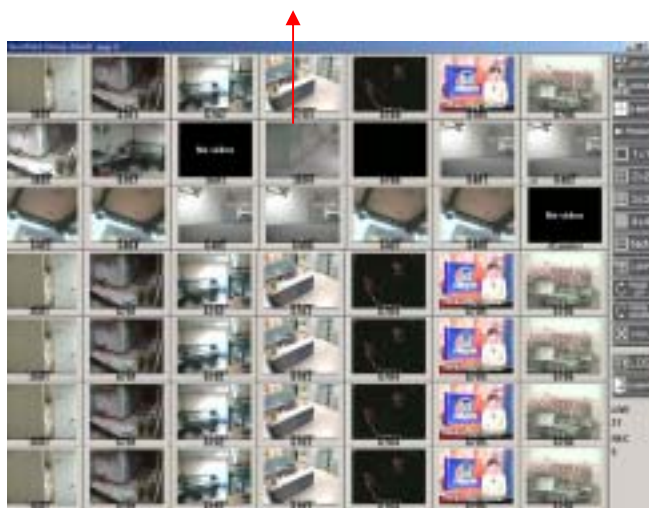
Fig. 18

20. Logout : Click  button to log out central control system.

21. Stop or Start live video: User can double click mouse right button to stop or start live video.

21.1 Stop live video: User can double click mouse right button to stop live video, if the window is playing live video.

Stop live video



21.2 Start live video: User can double click mouse right button to start live video, if there is NO live video playing on it.

Start live video

